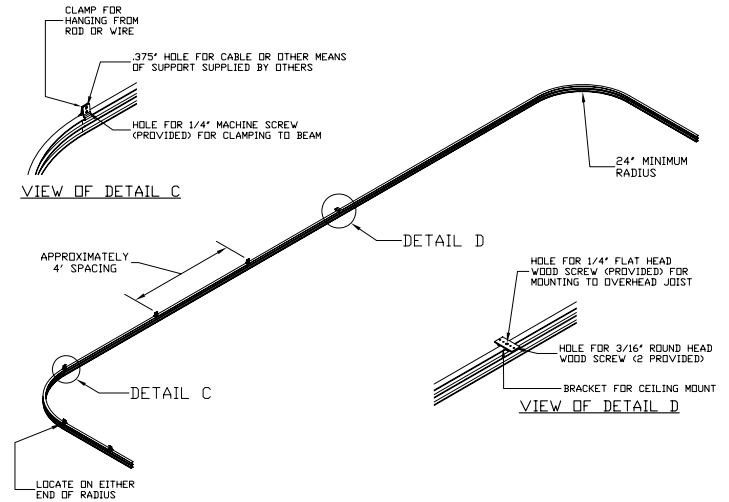
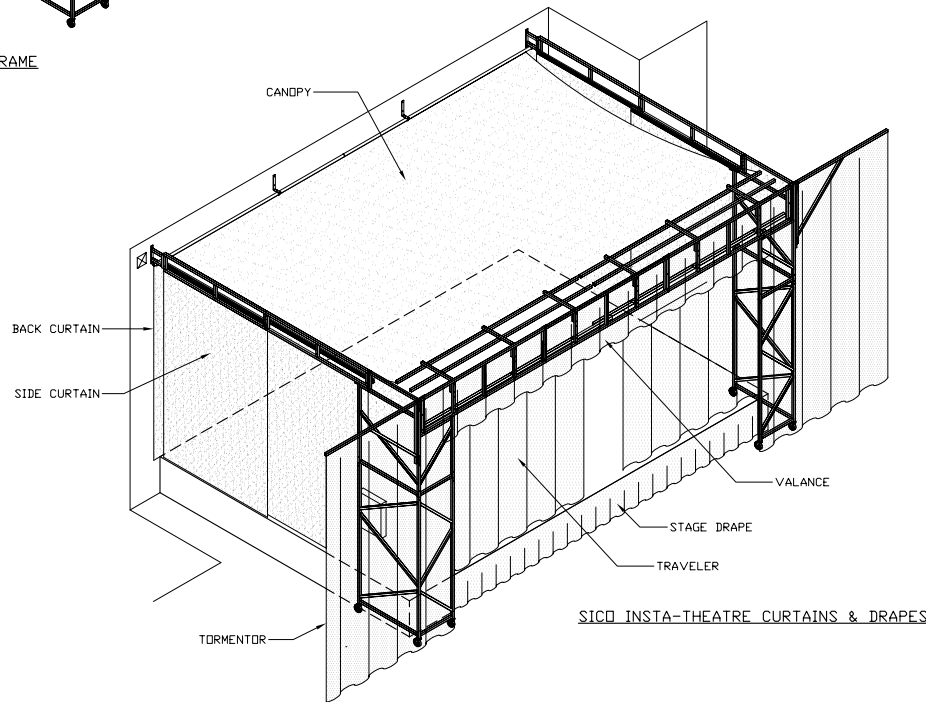


TYPICAL INSTA-THEATRE FRAME
IN OPEN POSITION



TYPICAL PROTECTIVE CURTAIN TRACK
REAR VIEW (MAY BE STRAIGHT OR CURVED AS SHOWN)



SICO INSTA-THEATRE CURTAINS & DRAPES

CUSTOMER SELECTIONS	
ELECTRICAL SUPPLY FOR INSTA-THEATRE LIGHTING (CHECK ONE):	
<input type="checkbox"/> 40amp 3 phase 208V	REFER TO NOTE 2 ON SHEET-1
<input type="checkbox"/> 60amp 1 phase 220V	
STAGE DRAPE/CURTAIN COLOR SELECTED FROM SICO VELOUR COLOR CHART:	
PROTECTIVE CURTAIN COLOR SELECTED FROM SICO RENO SUPERWEIGHT COLOR CHART:	
STAGE SURFACE (CHECK ONE):	
<input type="checkbox"/> TUFFDECK	CARPET COLOR SELECTED FROM SICO DURACORD COLORS
<input type="checkbox"/> CARPET	
<input type="checkbox"/> CARPET COLOR SELECTED FROM SICO DURACORD COLORS	
STAGE STEP SURFACE (CHECK ONE):	
<input type="checkbox"/> BLACK VINYL	CARPET COLOR SELECTED FROM SICO DURACORD COLORS
<input type="checkbox"/> GREY VINYL	
<input type="checkbox"/> CARPET	
RAMP CARPET COLOR SELECTED FROM SICO DURACORD COLORS:	
SELECTIONS APPROVED BY: _____	
TITLE: _____	
DATE: _____	

Typical Insta-Theatre

SICO
7525 Cahill Road
Minneapolis, MN 55439 USA
Phone: 800-328-6138
Fax: 952-941-6688
www.sicoinc.com

Copyright 2003 SICO Incorporated

MOUNTING DETAILS

SCALE: 1/8" = 1'-0"

DRAWN BY: XXX

DATE: XX-XX-XX

DRAWING NUMBER:

REVISION DATE: _____

REVISION NUMBER: _____

XXXXX-2 (of 2)

NOTES:

- 1.) The SICO INSTA-THEATRE SYSTEM shall be installed upon a wall in the customer's facility. The customer shall provide clear space height plus 6". Clear width shall be nominal Insta-Theatre