



# Bed-Face Mounting Instructions

for Room Maker Beds

## BEFORE YOU BEGIN ...

Please read and understand the instructions **before** you start to attach the face to the bed.

If you have any problems when installing,  
contact SICO Customer Service at  
1-800-328-6138

## TOOLS AND SUPPLIES REQUIRED

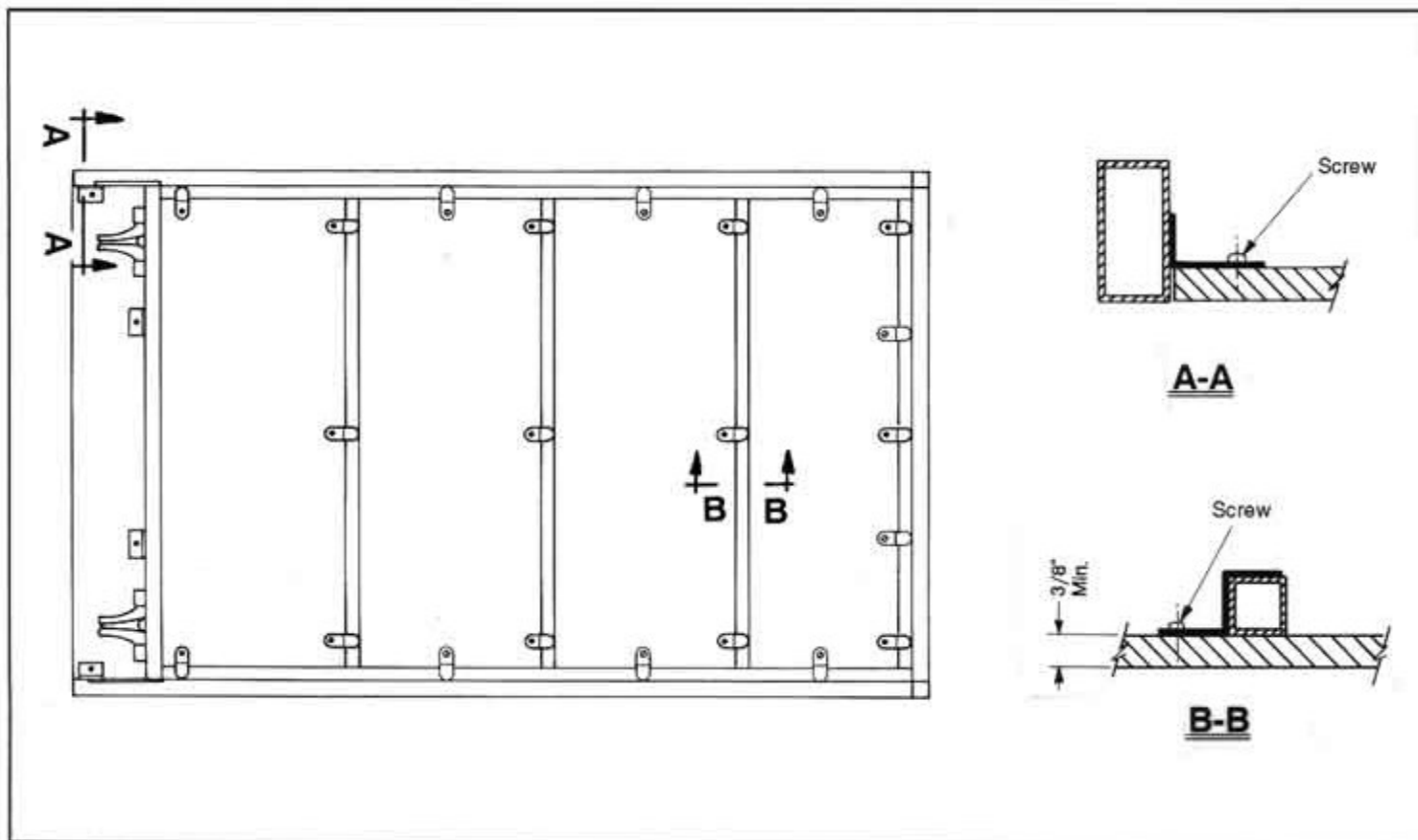
- Phillips screwdriver
- Adhesive cartridge (10-oz.) dispenser
- Adhesive: Use Franklin FS-100 or equivalent if adhesive is not furnished with your bed.

## INSTALLATION INSTRUCTIONS

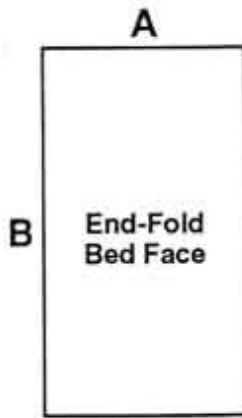
1. Cut the bed face to the appropriate size. Refer to the charts on the reverse side of this sheet.

2. Make sure the surfaces to which adhesive will be applied are clean, dry, and free of dust, loose paint, or other foreign matter.
3. Apply a 1/4" bead of adhesive along the frame cross-members and side rails to which the face will be attached.
4. Carefully position the face, and press it against the frame.
5. Metal clips are supplied to hold the face in position while the adhesive sets up:
  - Two side-rail clips (A-A below) are part of the bed frame.
  - Frame clips (B-B) and screws are shipped with the bed. King beds include 44 clips, and all other sizes include 22.

If the face is 3/8" thick, attach the clips using the #12 x 3/8" Phillips-head screws provided. If the face is thicker or thinner than 3/8", use appropriately longer or shorter screws.



# BED FACE DIMENSIONS



## End-Fold Inset Installation

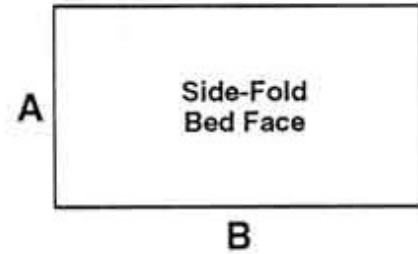
BED SIZE	A	B
Twin Regular	38-1/4"	79-5/8"
Twin XL	38-1/4"	84-3/4"
Double Regular	53-1/4"	79-5/8"
Double XL	53-1/4"	84-3/4"
Queen	59-3/4"	84-3/4"
King	38-1/16" (two)	84-3/4"

### NOTES:

- (1) Above dimensions leave a 1/8" gap between the face and frame on three sides.
- (2) To achieve the 76-1/4" width on a king bed face, leave a seam of 1/8" between the two face sections.

## End-Fold Overlay Installation

BED SIZE	A	B
Twin Regular	40-1/2"	80-3/4"
Twin XL	40-1/2"	85-7/8"
Double Regular	55-1/2"	80-3/4"
Double XL	55-1/2"	85-7/8"
Queen	62"	85-7/8"
King	39-3/16" (two)	85-7/8"



## Side-Fold Inset Installation

BED SIZE	A	B
Twin Regular	43-5/8"	74-1/4"
Twin XL	43-5/8"	80-1/4"
Double Regular	58-5/8"	74-1/4"
Double XL	58-5/8"	80-1/4"
Queen	65-1/8"	80-1/4"

### NOTES:

- (1) Above dimensions leave a 1/8" gap between the face and frame on three sides.

## Side-Fold Overlay Installation

BED SIZE	A	B
Twin Regular	44-3/4"	76-1/2"
Twin XL	44-3/4"	82-1/2"
Double Regular	59-3/4"	76-1/2"
Double XL	59-3/4"	82-1/2"
Queen	66-1/4"	82-1/2"

